

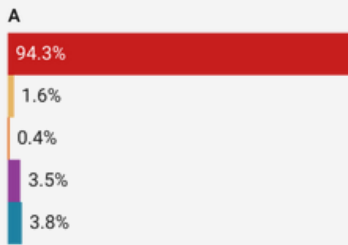
HOPEDALE, MA

Population: 6,021
Median Household Income: \$120,750
Per Capita Income: \$54,306

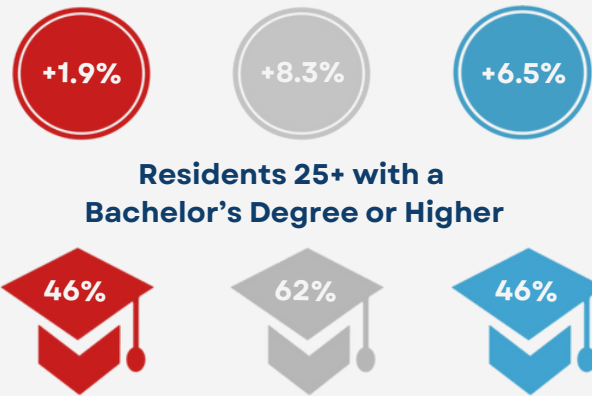
Socioeconomic

Race:

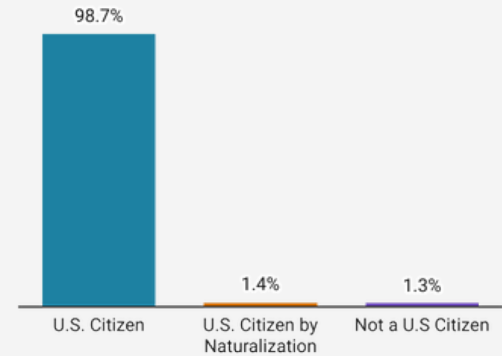
■ White
■ Black or African American
■ Asian
■ Hispanic or Latino origin (of any race)
■ Other/Multiracial



Hopedale 495/MW MA
Population Growth 2012-2022



Citizenship:

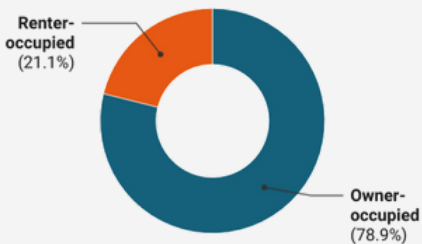


Housing

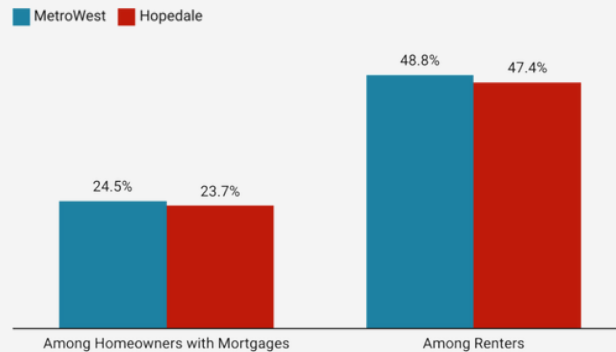
Total Housing Units: 2,300

Vacant Housing Units: 129

Housing Tenure:



Cost Burden:



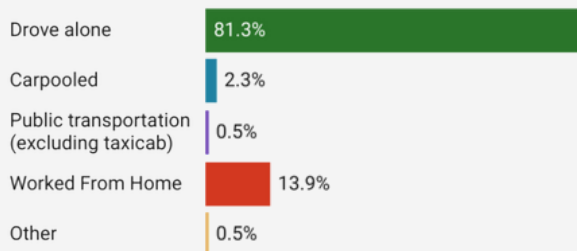
Year Structure Built:

2000 or later (14%)
1980-1999 (28%)
1960-1979 (9%)
1959 or earlier (48%)

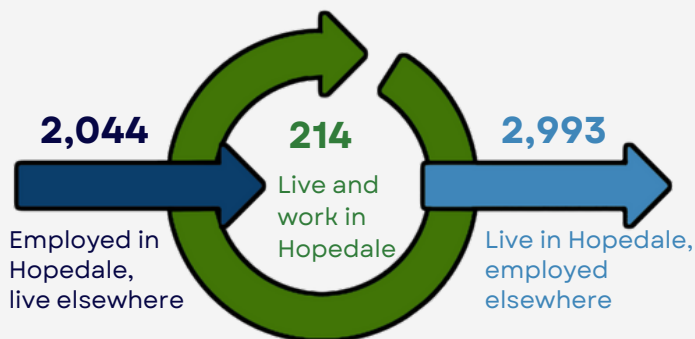


Commuting

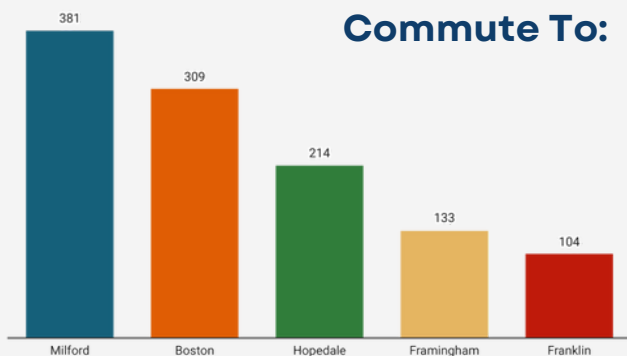
Getting to Work



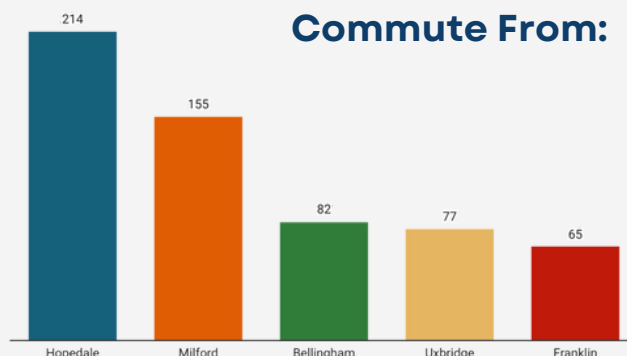
Inflow/Outflow



Top Communities Workers Commute To:



Top Communities Workers Commute From:



Key Industries

Top Industries by Average Employment (Q2 - 2023)



Labor Force:
3,118

FY 23 Industry Data

Total Payroll Dollars
\$182,516,516

Average Weekly Wages:
\$1,513

Average Monthly Employment:
2,320

Number of Business Establishments:
216

Top Industries by Number of Establishments (Q2 - 2023)

