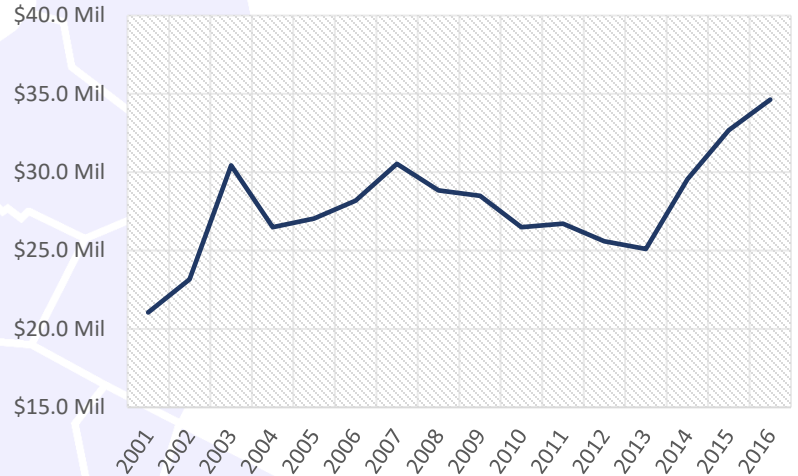


Sherborn

STRENGTH IN NUMBERS: 2018 EDITION Demographic Data for the 495/MetroWest Region

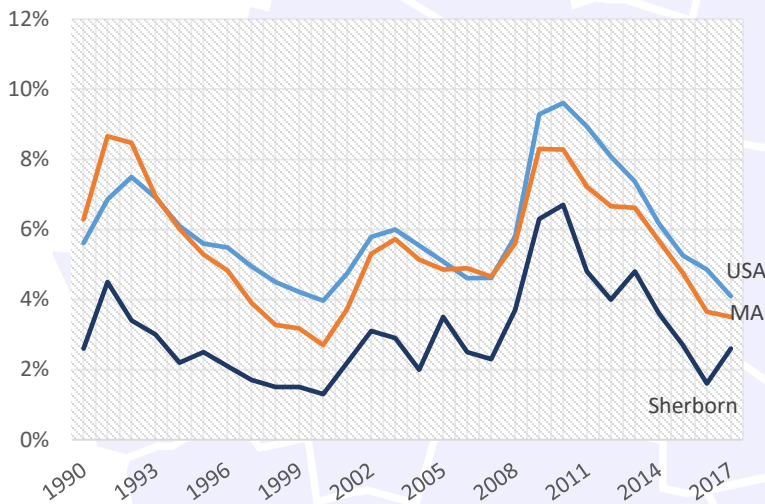
Increasing Payroll

From Q2 2016 to Q2 2017, the payroll for all places of employment in Sherborn was \$37,355,392.³ Since our last report the payroll has increased over \$2 million and the year to year trend remains positive.



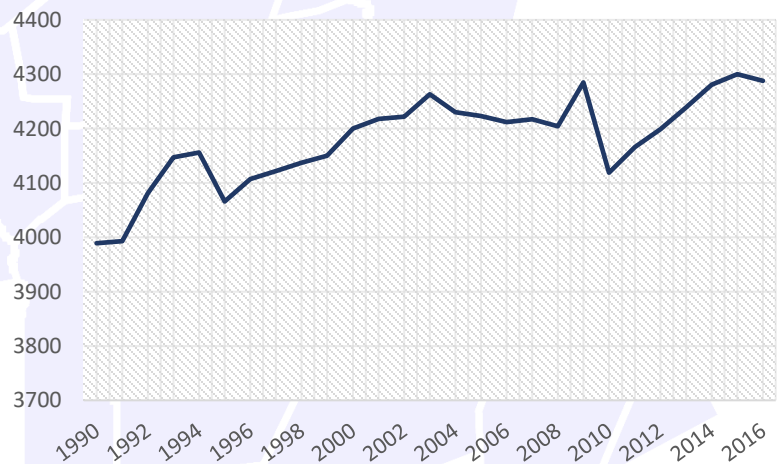
Low Unemployment

Beyond the year to year averages, in February 2018, the unemployment rate in Sherborn was 2.5%. This is much lower than the 495/MetroWest regional unemployment rate, which was at 3.4% and significantly lower in comparison to the state and national unemployment rates, which were at 4.0% and 4.1%.³

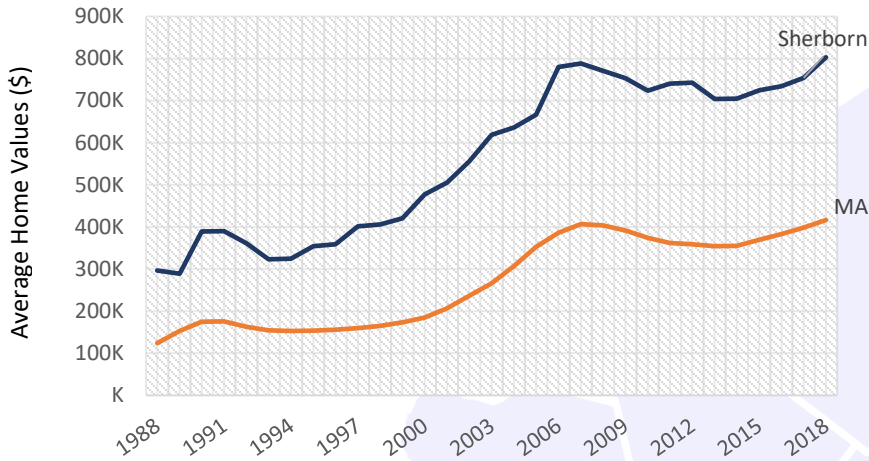


Population

In 2000, the population of Sherborn was 4,200.⁵ The population slightly decreased by 2010 to 4,119. However, the 2016 population estimate is 4,288.⁵



Rising Home Values



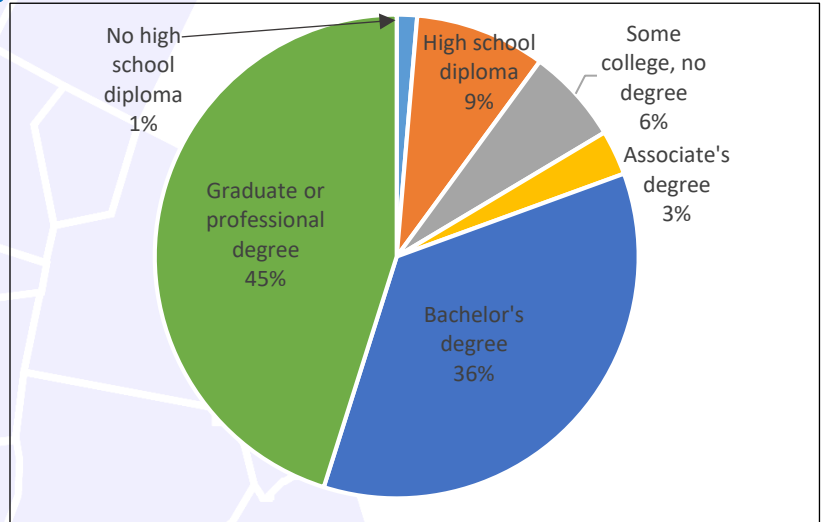
Sherborn average Home Value is \$802,876 vs. M.A average of \$416,426

Median Sales Price Snapshot

In March 2018, the median single family sales price in Sherborn was \$375,000.¹ This is lower than the state median sale price which was \$354,000¹, but higher than the national median which was \$251,500².

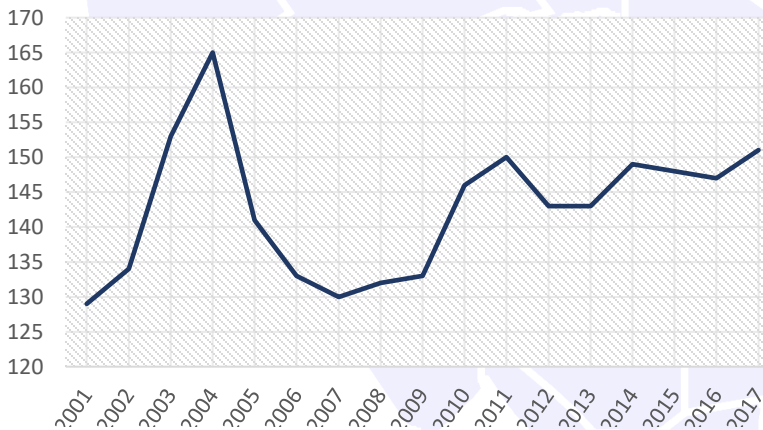
Highly Educated

Sherborn has an extremely educated population compared to the state and to the nation with 81% of residents having a bachelor's degree or higher. During the same time 41.2% in Massachusetts had a bachelor's degree or higher, while only 30.3% in the U.S. had one.⁴



2012-2016 ACS (U.S. Census Bureau)

Employers



After a spike in 2004, the number of employers in Sherborn has slowly been rising. In 2001, there were 129 employers in the town, and by Q2 2017 there were 151.³

Mass.gov Municipal Databank <http://www.mass.gov/dor/local-officials/municipal-databank-and-local-aid-unit/databank-reports-new.html> (Line graph municipal data)
 1. The Warren Group <https://www.bankerandtradesman.com/real-estate-transactions/town-stats/> 2. Ycharts Average US Home Values https://ycharts.com/indicators/sales_price_of_existing_homes 3. Mass.gov Labor and Workforce Development <http://www.mass.gov/lwd/economic-data/> 4. US Census Bureau <https://www.census.gov/> 5. UMASS Donahue Institute <http://www.donahue.umassp.edu/news-events/institute-news/new-population-estimates-for-mass-released-interactive-map-available>